

## Billy Bowie

## KSA / AVC

### Customer profile

Billy Bowie Special Projects Ltd. is a well established Scottish company providing a broad range of services and skills to local authorities and industry throughout the UK. With its head office based at Moorfield Industrial Estate in Kilmarnock and depots throughout the UK it is a company well placed to serve the wet waste industry.

From its origins in 1991 with one vehicle, Billy Bowie Special Projects Ltd. has grown to be one of the most modern operations within the industry and now boasts an impressive fleet of 70 vehicles that includes Gully suckers, Articulated sludge carriers, Liquid ring, high performance tankers, Various rigid vacuum tankers with capacities from 1000-4000 gallons, Jet-Vacs and KSA - mobile sludge dewatering units from Simon Moos.

### Key facts

**Company**

Billy Bowie Special Projects Ltd.

**Location**

Moorfield Industrial Estate  
Kilmarnock, Ayrshire  
Scotland

**Web**

[www.billybowietankers.co.uk](http://www.billybowietankers.co.uk)

**Simon Moos solution**

KSA—Mobile sludge dewatering



*"The KSA dewatering units greatly supplement our existing fleet and cross over to our waste composting division. We have just invested £2.5M in a state of the art Vertical composting unit which we recycle the dewatered cake through that arises from the KSA system, this greatly benefits the environment. With the rising cost of fuel and landfill tax the economic and environmental attributes of the Simon Moos KSA dewatering systems makes them the perfect acquisition to our business model".*

*Billy Bowie, Owner of Billy Bowie special projects ltd.*

## Billy Bowie

## KSA

### Decision : Invest to reduce costs!

Billy saw the need to reduce not only his running and disposal costs but also his company's carbon footprint and made the decision to invest in the well tested Moos sludge dewatering systems and purchased the chassis mounted KSA mobile sludge dewatering unit. Billy Bowie is using the KSA to various service jobs that includes:

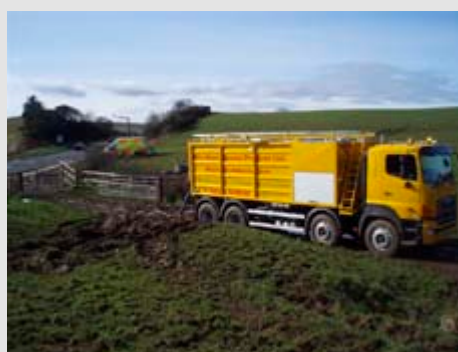
- Septic tank and interceptor cleaning.
- Car washes.
- Gully emptying and drain cleaning.
- Culvert Cleaning.
- Grease traps.
- All aspects of factory cleaning and tank cleaning.
- Oil pollution control.

### Product facts

The KSA is developed for mobile sludge dewatering in connection with emptying of septic tanks, servicestations, grease traps, petrol & oil separators, carwash, WWTP, Gullyes etc. etc.

The KSA system is a very effective system, which is characterized by:

- Large volume reduction
  - typical > 90 %.
- High dry matter percentage in dewatered sludge
  - normally > 15 %.
- High COD and BOD<sub>5</sub> reduction
  - up to 95%.
- A mobile system with large draining capacity.
- A well-tested system with 30+ years development experience.
- A system where you due to volume reduction obtain an attractive total economy as a result of reduced wages, fuel and depositing costs.



*"The potential savings our company can make with this new equipment means that we can become more competitive allowing us to pass these savings onto our existing customers and start targeting new customers".*

*Willie Paterson, Facility manager, Billy Bowie special projects Ltd.*